



2012

Team Name: _____

1) So, have we made it obvious enough that it would be helpful to follow us on Twitter? If you got the hint, then this question should be a snap! (And that might just help you later in the game.) **ACTION!** Tweet your team name with the hash tag “#The 2012DisneyChallenge” to @disneychallenge. (3 Points) (minus 1 if hash tag is missing from Tweet)

2) The Mark Twain Riverboat has how many smoke stacks? (2 Points)

2 (The other 2 are steam vents) (Just 2 ok)

3) Where should you place plastic baskets and for whom should you help Disney keep the country eco-friendly? (4 Points)

Above the waste bins & All Earth's critters (2 pts for each part)

4) On Snow White's Scary Adventure, how many pieces of clothes are hanging on the clothesline in the dwarves' house? (3 Points)

7

5) What are the first 7 words of the Yale University Bright College Years song? (5 Points)

Oh, let us strive that ever we (minus 1 for each missing or incorrect word)

6) How tall is ASIMO? (4 Points)

4' and 3" tall (137 cm tall) (minus 1 if "and" or "tall" is missing. cm not needed)

Bonus: How much does he weigh? (2 points)

119lbs (54kg) (kg not needed)

7) What object appears and disappears from The Bride's hands? (3 points)

A Hatchet (2 points for An Axe)

8) ~~PICTURE THIS!~~ Where can this map be found? (4 points)

On the lower deck of the Sailing Ship

Columbia (minus 1 for not mentioning

Lower deck or just Columbia)



9) What month is it in Mickey Mouse's House? (3 points)

February

10) What is the name of the riverboat in Splash Mountain? (3 points)

ZIP-A-DEE LADY

11) How do you start a battle with a Kraken? (5 points)

Hit the ship several times to sink it (minus 1 for each missing word)

12) ~~WHERE DID I HEAR THAT?~~ "You gotta help me; I'm trapped inside this mailbox!" (4 points)

Roger Rabbit's mailbox in Toontown (3 pts for RR mailbox, 1 pt for Toontown)

13) The 5 switches labeled Upper, Back, Middle, Front, and Back correspond with what 5 words? (5 points)

Lights, Sconce, Sconce, Fans & Fans (1 pt each)

14) “I’ll save you Bucks, Bucks, Bucks_____” is written on the Al’s Toy Barn receipt. (4 points)

15) J.T.’s Maniacal Monorail Pillar Question - What 2 signs are posted on Monorail Pillar 217? (4 points)

No Smoking Beyond This Point & Smoking Area Beyond This Point (2 pts each)

16) What is the number of the Engine Company at the Fire Station located in Toontown? (2 points)

101

17) Where can you find the word INFIRMIRY written on green wood (4 points)

2nd Floor of the Jungle Cruise Queue (2 points for Jungle Cruise, 1 for Queue or line and 1 for 2nd Floor)

18) What are the names of the two large ships you can take a ride on around The Rivers of America? (1 point)

The Mark Twain Riverboat & The Sailing Ship Columbia

19) What movie (specifically) was the inspiration for Mr. Toad’s Wild Ride? (3 points)

The Wind in The Willows

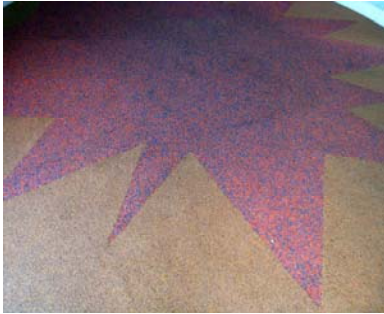
20) What year was the book “Savage People” with the Nootka Indian Chief on the cover written? (5 points)

1788

21) PHOTO CHALLENGE.

Shag This!

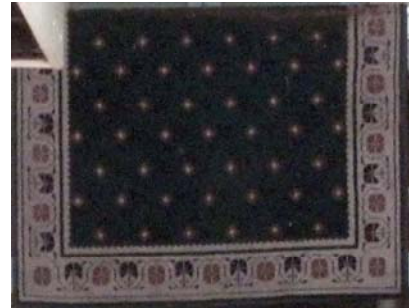
Identify the attraction, store, or area where these carpet or rug patterns can be found. (2 points each 18 points total)



Donald's Boat



Tarzan's Tree House



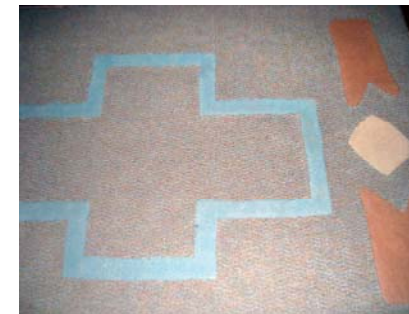
New Orleans Square Station



Carriage Place



Innoventions Downstairs



Mickey Mouse's House



Adventureland Bazaar



Disneyland Opera House



Innoventions Stair Case

22) What position does Ezekiel Talbot hold? (4 points)

Ship Chandler

23) How many total red stars are on all of the gold banners hanging from the Main Street Cinema marquee? (5 points)

314 (minus 1 pt for each + or - up to 5)

24) The captain on Finding Nemo's Submarine Voyage orders the sub to be taken up before a run in, or an encounter with what? (4 points)

Sea Serpent or Mermaid (2 pts for each)

25) ~~COMPLETE THIS PHRASE~~ "Dear Mickey, I know you're real busy but..." (4 Points)

don't forget our dinner date Sunday night! Love, Minnie (minus 1 for each missing word)

26) How many letters and numbers make up an Autopia license plate? (3 Points)

6 - 3 Letters then 3 Numbers (Just 6 ok)

27) What does the red sign with the yellow letters directly above the crying donkey say ? (4 Points)

STROMBOLI'S THEATER

28) If you found One Magic

Feather, who should you
contact and where? (5 Points)

Dumbo

c/o Timothy Mouse

Walt Disney Studio

Hollywood, Cal. (minus 1 for each missing word of punctuation)

29) ~~PICTURE THIS!~~ Where is Ty relaxing? (4 points)

In Fantasyland seating area behind Edelweiss

Snacks (2 pts for Fantasyland, 1 pt for seating Area, 1 pt for Edelweiss Snacks)



30) On what planet does C3PO say “And I will not give you permission to come aboard.”? (4 points)

Naboo

31) One of the Scrumptious Delicacies advertised on the Mint Julep Bar sign is Mickey-Shaped what? (3 points)

Beignets

32) How many steps are there in the “dungeon area” of the queue on Snow White’s Scary Adventure? (3 points)

6

33) ~~ACTION!~~ Demonstrate the Disneyland Railroad hand signal for “Red Light” to the Event Crew before 3:30pm today. (Remember that thing I said about Twitter helping you later in the game? Yeah...) (5 points)

34) What are the names of the 3 Little Pigs and what kind of house does each one have? (3 points)

Fifer Pig (Straw House), Fiddler Pig (Stick House), & Practical Pig (Brick House) (1 pt each complete, or 2 pts if names or house types are missing)

35) Johanna's Nastiest Question of the Year! What was Rex's favorite part of last summer? (6 points)

When Andy set up a dinosaur jungle in the sandbox (minus 1 for each missing word)

36) How many darts are stuck in the dartboard on Roger Rabbit's Car Toon Spin? (Not to be confused with Johanna's Nastiest Question from 2009!) (3 points)

2

37) What is missing from this list of words? Shuttle Systems, Hardpoints, Data Storage, Overrides. (5 points)

Attachments

38) COMPLETE THIS PHRASE "We're now in Splash Mountain..." (4 Points)

Where every day is a Zip-a-dee-doo-da day (minus 1 for each missing word)

39) When was the Laod Bhang & Co Fireworks Rocket Factory established? (3 Points)

1845

40) What little matter did the Ghost Host forget to mention? (2 Points)

Beware of Hitchhiking Ghosts

41) If you are facing the sign for Tugley Woods, which way should you turn? (3 Points)

Right

42) Who is so famous that others want his Auto-graph? (5 Points)

Sparky

43) ~~PHOTO~~ ~~DISNEY~~ BINGO (AKA DINGO!)

Using 1 camera, capture photos of the items listed below. Get a “Dingo” by capturing 5 (or 4 and a free space) in a row. Dingo’s can be formed up & down, side to side, or diagonally. All photos must be on 1 camera and will be confirmed at the Finish Line. Photos can not be of Disney Challenge participants EXCEPT for column “O”. (There MUST be Disney Challenge Participants in those photos.)

D	I	N	G	O
Identical Twins	Sunburn	Futuristic Helipad	Feathers In Hair	Stranger posing for a photo with your team
Visible Undergarment	Cast Member with an out of country nametag	Stroller filled with stuff other than a child	Someone wearing a bandage, cast, or sling	A score of Space Scout or better on Buzz Lightyear
Mickey Ears with one of the Event Crew’s names	Someone carrying an umbrella	FREE SPACE	Fanny Pack	Entire team with a costumed character
Socks & Sandals	Dapper Dans Performing	A Parade	It’s A Small World Clock Show	An opposing team without them knowing it
Aladdin's Lamp	A British Flag	A Magician	A Dwarf	Recreate an Event Crew pose from the Website

(1 point for each picture. 2 extra points for each Dingo. That’s 48 possible points!)

44) The Santa Fe Magazine with the picture of Walt Disney behind a sign that reads “Entrance Disneyland Grand Canyon” is from what month & year?

(5 Points)

June 1958

45) Where can you partake of a royal feast - speedily serving savory family fare? (4 points)

Troubadour Tavern

46) What is Dr. Smock missing? (5 points)

His Golfing Trophy

47) What color snorkel can be found in locker 115? (5 points)

Red (or Pink)

48) What kind of overalls does Mickey wear while gardening? (3 points)

MouseKosh

49) WHERE DID I HEAR THAT? "With this disguise I'll fool them all" (3 points)

Snow White's Scary Adventure - Wicked Queen (2 pts for attraction, 1 pt for Wicked Queen)

50) □Ξκ↓ 1N ↓ΞV □Vκ↓ΞV7 ↓1Cv ΔU vU7Δ7 1U
Ξ71UΞ↓ ↓7Vv Y1↓κUv? (5 points)

Partly Cloudy (Uκ7↓↓v "↓ΔU7v) (Either one is ok)

51) How many books is Angus MacBadger holding while balancing on a ladder in the library? (3 points)

6

52) What is the ticket taker's name at the Main Street Cinema? (3 points)

Tilly (from Marceline Mo) (Just Tilly ok)

53) What type of Safety Valve located behind The Masculine Small House is made by CONBRACO IND., INC. U.S.A.? (4 points)

"Apollo ®" (Just Apollo ok)

54) ~~PICTURE THIS!~~ Where can this picture be found? (5 points)

On The Lilly Belle

Bonus: Who is woman in the photo?
(3 points)

Lillian Disney



55) What is the charge for a Non-Chase Bank member to pull out money from an ATM in Disneyland? (3 points)

\$2

56) According to the Periodic Table of Food Chemistry, what is the symbol for Crunchy Snacks? (4 points)

Cs

57) How many Butterflies are under glass in the large bamboo frame with the white background in the Jungle Cruise queue? (5 points)

11 (The other 3 are moths) (Just 11 ok)

58) What cartoon poster shows Donald Duck glaring and pointing at a chipmunk? (4 points)

Out of Scale

59) Add up the Club Cards' values who are making an arch before you play croquet. (And for all those blackjack aficionados, in this case, Aces only count as one.) (4 points)

10 (4, 2, A, 3) (just 10 ok)

60) Chuck Boyajian will keep your what shining? (3 points)

Castle

61) What is the name of Donald's Boat? (2 points)

SS Miss Daisy (Just Miss Daisy ok)

62) What 2 settings does an old camera with a Twindar Lens have? (5 points)

5-10ft and Beyond 10ft

63) If adventure has a name, it must be what? (5 points)

Tatooine

64) On Pinocchio's Daring Journey, what is the top score possible on the Hammer & Bell game? (3 points)

50

65) ~~COMPLETE THIS PHRASE~~ "Can you operate the mighty microscope? An inner space adventure needs you .." (5 Points)

Hurry! Opportunities are shrink-ing! Snowflake EFX Ltd. (1 pt for Hurry, 2 pts for 2nd part, 2 pts for 3rd part)

66) There is a guy who appears to be barfing over a bridge. What color pants is he wearing? (5 Points)

Blue

67) In what year did a Czechoslovakian writer name mechanical helpers "Robots" (4 Points)

1920

68) What word is written between "Lt. Rene Dubois" and "Frigate La Pomone"? (5 Points)

Liberty

Bonus: How many stars surround the word? (4 Points)

5

69) MISSING PAGES (5 points)

The following story is incomplete. Find the missing pages and complete the book.

“Based upon the Tarzan Stories created by Edgar Rice Burroughs. Welcome! Tarzan and I invite you to explore our home in the trees and discover its secrets and adventures. Jane. Many years ago a young family enjoyed their life here until the fateful night of the Sabors attack. Kala bravely rescued the lone survivor. With love she raised the baby as her own and named him Tarzan. Under Kala’s watchful eye, Tarzan grew tall and strong never realizing he was human. When I first met Tarzan, I was frightened. As our friendship grew I taught Tarzan what it means to be human. Today we live happily here amongst the trees, close to our gorilla family and our jungle friends. Please explore the treehouse grounds. You may make a discovery of your own.”

Together they share many memories. What is your favorite?

In return, he showed me the many wonders of his world as ‘Lord of the Apes’

(minus 1 for each missing or wrong word)

70) Why is the Toontown Post Office window closed? (3 points)

GONE FISHIN

71) What will you reach by dialing *6 on an old fashioned black telephone?
(5 points)

Disneyland Resort Lost and Found (Only 4 pts for Lost & Found)

72) How many gargoyles are in each “stretching room” in The Haunted Mansion?
(2 points)

8

73) What is the first flavor (alphabetically) of Goofy's Mostly Sour Candy?
(3 points)

Banana

74) What is Mickey Mouse's Home Address? (4 points)

1 Neighborhood Lane

Mickey's Toontown (2 pts each line)

75) What are the 2 methods of payment accepted for an excursion on The Jungle Cruise? (3 points)

Cash or Barter

76) What color is the Devil's hair? (4 points)

White

77) Which way do the stripes in the launch tunnel of Space Mountain rotate?
(Clockwise or Counter Clockwise) (2 points)

Counter Clockwise

78) What sign is a little green worm holding in Pinocchio's Daring Journey?
(3 points)

Candy Apples

79) What date was the Lilly Belle officially added to the Disneyland Railroad
Fleet? (3 points)

July 4th 1976 (1 pt for each)

Bonus: Who was the first official VIP to ride in this car? (4 points)

The Emperor of Japan Hirohito and his wife (Just Emperor of Japan ok)

80) WHERE DID I HEAR THAT? "Do come back." (3 Points)

Alice in Wonderland - Sign (minus 1 if sign is not mentioned)

81) At the entrance to what attraction will you find a red and white striped lighthouse? (2 points)

Storybook Land

82) What do the four file drawers in the Toontown Cab Co contain? (At least according to the labels.) (4 points)

Invoice A-L, Invoice M-Z, Do-Nuts, Bills (1 pt each)

83) What is the title of the book that sits on top of this bookshelf? (4 points)



Disneyland Main St. City Hall

84) The two birds with hammers for heads are nailing up signs that have what words on them? (4 points)

WATCH OUT

85) How many planks are covering the boarded-up mine across from the Big Thunder Mountain exit? (3 points)

8

86) **ACTION!** Becca's favorite video game is Fruit Ninja played on a big screen. Beat her score of 217 on "Classic" mode. Take a picture of someone on your team doing this and text it, along with your team name to 661-510-2387 by 3:30pm. Think you're really hot? Try beating the high score of the day! (5 points)

87) On the oversized Astro Blaster Operating Instructions, what is the score on the counter? (3 points)

112164

88) What Disneyland Eatery could also be called “White Flower Found High in Alps Munchies” (5 points)

Edelweiss Snacks

Bonus: What metallic bird is its mascot? (2 points)

A Turkey

89) What is the name of submarine 307? (4 points)

Voyager

90) One of these things is not like the other. Dave always wears one character on his pin lanyard. Today, however, he is wearing one different pin. What is the name of the odd character he is wearing? If you didn't notice it at the starting line, you'd better find him before 3:30pm when he takes his lanyard off. (5 points)

Professor Ludwig Von Drake (Ludwig Von Drake ok, Von Drake 4 points)

91) What is the only sports team to have their logo on the outside of Innoventions? (2 points)

The Anaheim Ducks

92) Who is the Professor at the Photographic Art Studio? (4 points)

Barnaby Owl

Bonus: What two types of photos do they advertise? (4 points)

Wildlife Portraits & Scenic Views (2 pts ea)

93) What is on top of the skull in the potion brewing scene on Snow White's Scary Adventure? (3 points)

A bird

94) What are the official flight glasses of Star Tours? (3 points)

Dolby 3D

95) Where was the “Mark Twain’s” hull constructed? (4 points)

At the Todd Shipyards in Long Beach, California

Bonus: The Mark Twain sports a nine-Ton paddlewheel. (3 points)

96) Who wrote the article “Anna Gram Seeks Sleuths”? (4 points)

Greg Atkens

97) According to Ferb, what is The Internet? (5 points)

Forever

98) Where is Miss Chris’ Cabin? (3 points)

In Big Thunder Ranch (1 pt for Frontierland)

99) You thought we forgot...didn’t you? Tony’s Freakin’ Fire Extinguisher Question. Where is Fire Extinguisher 3102-4? (4 points)

At the entrance to Pirates of the Caribbean (Just Pirates ok)

100) **ACTION!** It’s time to open the Finish Line envelope in your Challenge Packet. Use the answers to the questions to decode the location of the Finish Line.

P I Z Z A P O R T P A T I O

Space #	1	2	3	4	5	6	7	8	9	10	11	12	13	14
---------	---	---	---	---	---	---	---	---	---	----	----	----	----	----

Make sure your entire team is there by 4:00PM. **Don’t be late!** Just in case you get stumped, remember The Disney Challenge Emergency Hotline is (661) 510-2387. (10 Point penalty if you call for the answer.)

Time Turned In: _____

Finish Line

Attention Space Rangers! You will need Buzz Lightyear's help to complete this mission. Head to Star Command and find the map of the Planets of the Galactic Alliance. Use it as a key to answer the following questions. Then, match the sectors up with the corresponding letters in the key. Finally, write those letters in the correct space #s of Question 100 on your Game Sheet to decode the message and reveal the location of the Finish Line. To Infinity and Beyond!

<u>Question</u>	<u>Sector</u>	<u>Space #</u>
1) This sector contains Lri'Cpnoor and its big brother Daavonwiik.	<u>6</u>	8
2) Where is the planet Jwanaamagoo-Chee?	<u>4</u>	7 & 14
3) Ooooooooooooooh The Green Men are from The Green Planet. What sector are we in?	<u>1</u>	5 & 11
4) The cluster of smooth planets are in this sector.	<u>8</u>	9 & 12
5) The planet that has the very obvious hidden Mickey and kind of resembles Earth is where?	<u>2</u>	2 & 13
6) Where are you going on your Secret Mission?	<u>9</u>	3 & 4
7) The only square planet is here.	<u>5</u>	1, 6 & 10

Key

1 = A	2 = I
3 = L	4 = O
5 = P	6 = R
7 = S	8 = T
9 = Z	